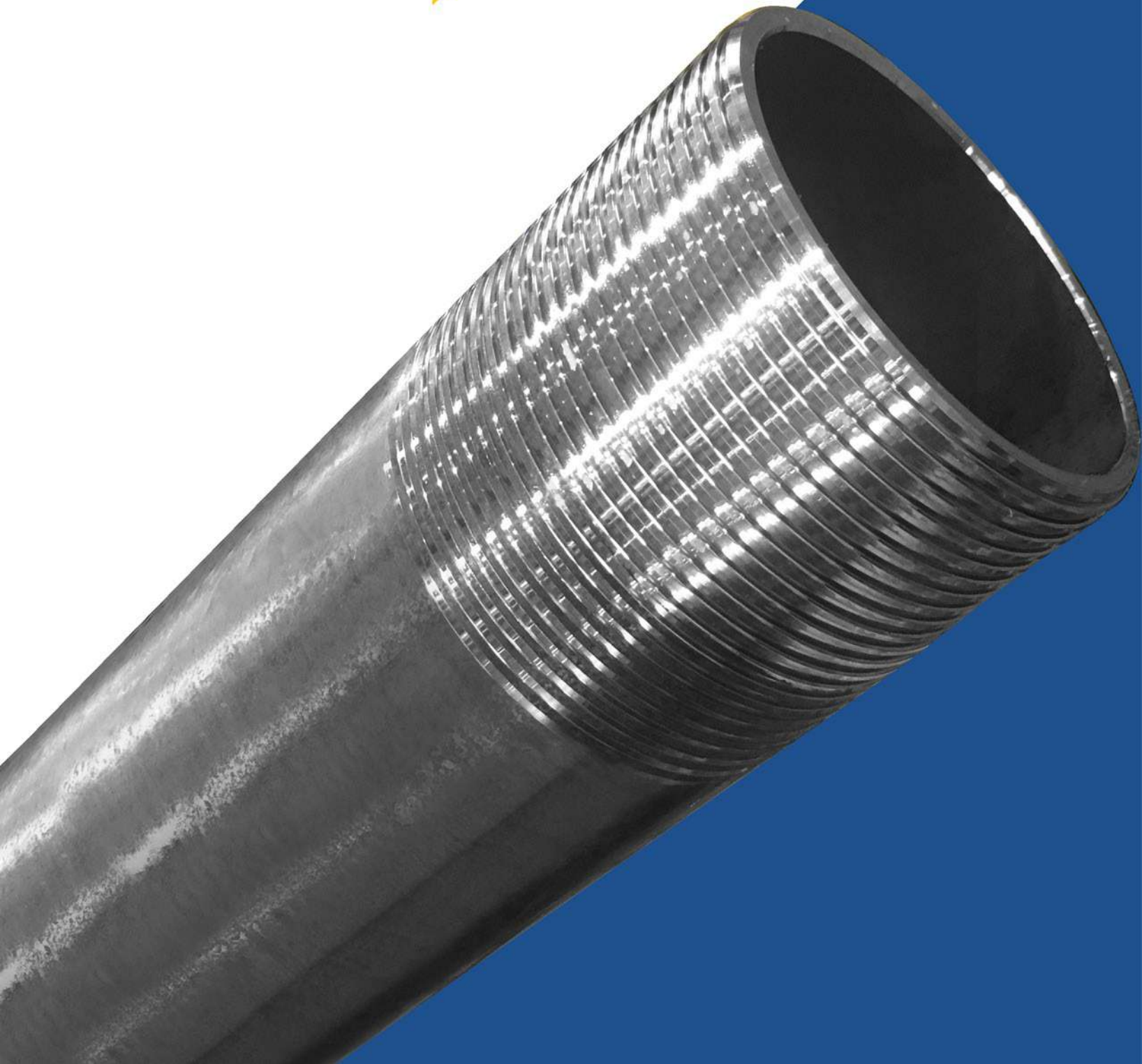


OCTG - CASING & TUBING





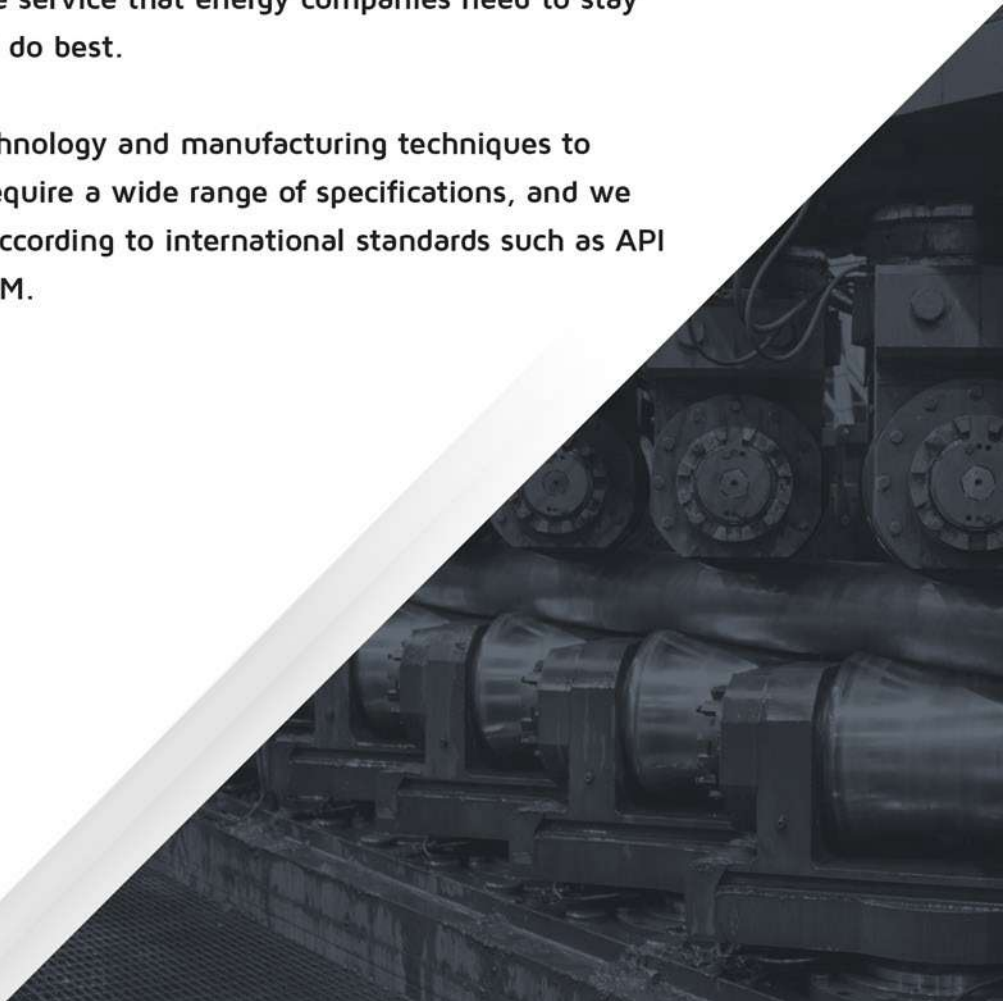
## OCTG - CASING & TUBING





At Axis Pipe and Tube we are committed to help our Partners in the Oil and Gas Industry achieve superior results. We do this by not only supplying premium quality Oil Country Tubular Goods (OCTG), but also delivering the service that energy companies need to stay focused on what they do best.

We use the latest technology and manufacturing techniques to serve Partners who require a wide range of specifications, and we can supply products according to international standards such as API 5CT, API 5L, and ASTM.







# OCTG

Our OCTG, Casing & Tubing products are manufactured with the highest quality standards utilizing the latest technologies in Electric Resistance Welding (ERW).

Finishing facilities consist of state-of-the-art walking beam gas furnaces providing quench and temper for grades through HC P110. Exceptional quality control and real time results are guaranteed through complete in-house metallurgical testing, including high collapse testing. Body and weld inspection is completed after hydrostatic testing up to 15,000 PSI. Threading is completed on 4 axis CNC controlled lathes. Handling systems prevent damage during processing utilizing controlled prismatic chains which prevent pipe to pipe contact.

## CASING & TUBING

---

### Capabilities

**Specifications:** API 5CT Latest Edition

**Size Range for Tubing:** 2  $\frac{3}{8}$ " through 4  $\frac{1}{2}$ "

**Size Range for Casing:** 4  $\frac{1}{2}$ " through 16"

**Wall Thickness:** 0.190" through 0.625"

**Grades:** J55, N80, L80, P110. Controlled Yield. High Collapse

**Lengths:** Range 2 & 3, up to 48 ft.

**Ends:** PE, STC, LTC, BTC, Axis HT Semi-Premium, NU, EUE

**Coatings:** Lacquer coated

**Heat Treatment & Threading:** 2  $\frac{3}{8}$ " through 9  $\frac{5}{8}$ "

Services for larger than 9  $\frac{5}{8}$ " available upon request.

**Hydrostatic Testing:** Up to 15,000 PSI for alloy grades after Heat Treatment

**Non-Destructive Testing:** Weldline UT, SEA and full body EMI for all alloy grades after Heat Treatment



## CASING CAPABILITIES

SIZE (in)	O.D. (in)	WALL	WEIGHT		DRIFT
			T&C lb/ft	PE lb/ft	
4 ½	4.500	0.205	9.50	9.41	3.965
		0.237	11.00	10.80	3.901
		0.250	11.60	11.36	3.875
		0.271	12.60	12.25	3.833
		0.290	13.50	13.05	3.795
5 ½	5.500	0.244	14.00	13.71	4.887
		0.275	15.50	15.36	4.825
		0.304	17.00	16.89	4.767
		0.361	20.00	19.83	4.653
		0.415	23.00	22.56	4.545
		0.476	26.00	25.56	4.423
		0.500	26.80	26.72	4.375
7	7.000	0.530	28.40	28.16	4.315
		0.231	17.00	16.72	6.413
		0.272	20.00	19.56	6.331
		0.317	23.00	22.65	6.250 AD*
		0.362	26.00	25.69	6.151
		0.408	29.00	28.75	6.059
		0.453	32.00	31.70	6.000 AD*
8 ⅝	8.625	0.498	35.00	34.61	5.879
		0.540	38.00	37.29	5.795
		0.264	24.00	23.60	7.972
		0.304	28.00	27.04	7.892
		0.352	32.00	31.13	7.875 AD*
		0.400	36.00	35.17	7.700
		0.450	40.00	39.33	7.625
9 ⅝	9.625	0.500	44.00	43.43	7.500
		0.557	49.00	48.04	7.286
		0.312	32.30	31.06	8.845 AD*
		0.352	36.00	34.89	8.765
		0.395	40.00	38.97	8.750 AD*
		0.435	43.50	42.73	8.599
		0.472	47.00	46.18	8.525
10 ¾	10.750	0.545	53.50	52.90	8.500 AD*
		0.595	58.40	57.44	8.375
		0.609	59.40	58.70	8.251
		0.625	61.10	60.13	8.219
		0.279	32.75	31.23	10.036
		0.350	40.50	38.91	9.894
		0.400	45.50	44.26	9.875
13 ⅜	13.375	0.450	51.00	49.55	9.694
		0.495	55.50	54.26	9.625
		0.545	60.70	59.45	9.504
		0.595	65.70	64.59	9.404
		0.330	48.00	46.02	12.559
16	16.000	0.380	54.50	52.79	12.459
		0.430	61.00	59.50	12.359
		0.480	68.00	66.17	12.259
		0.514	72.00	70.67	12.191
		0.375	65.00	62.64	15.062
		0.438	75.00	72.86	14.936
		0.495	84.00	82.05	14.822

## TUBING CAPABILITIES

Size (in)	O.D. (in)	Wall (in)	Nominal Weight			Drift (in)
			Non-Upset T&C (lb/ft)	Ext. Upset (lb/ft)	PE (lb/ft)	
2 ⅜	2.375	0.190	4.60	4.70	4.44	1.901
		0.218	5.10	5.30	5.03	1.845
		0.254	5.80	5.95	5.76	1.773
		0.261	6.00	6.20	5.90	1.759
2 ⅞	2.875	0.217	6.40	6.50	6.17	2.347
		0.276	7.80	7.90	7.67	2.229
3 ½	3.500	0.254	9.20	9.30	8.81	2.867
4 ½	4.500	0.271	12.60	12.75	12.25	3.833

Products may be manufactured to conform to additional project or client specifications, after technical review and written mill acceptance.

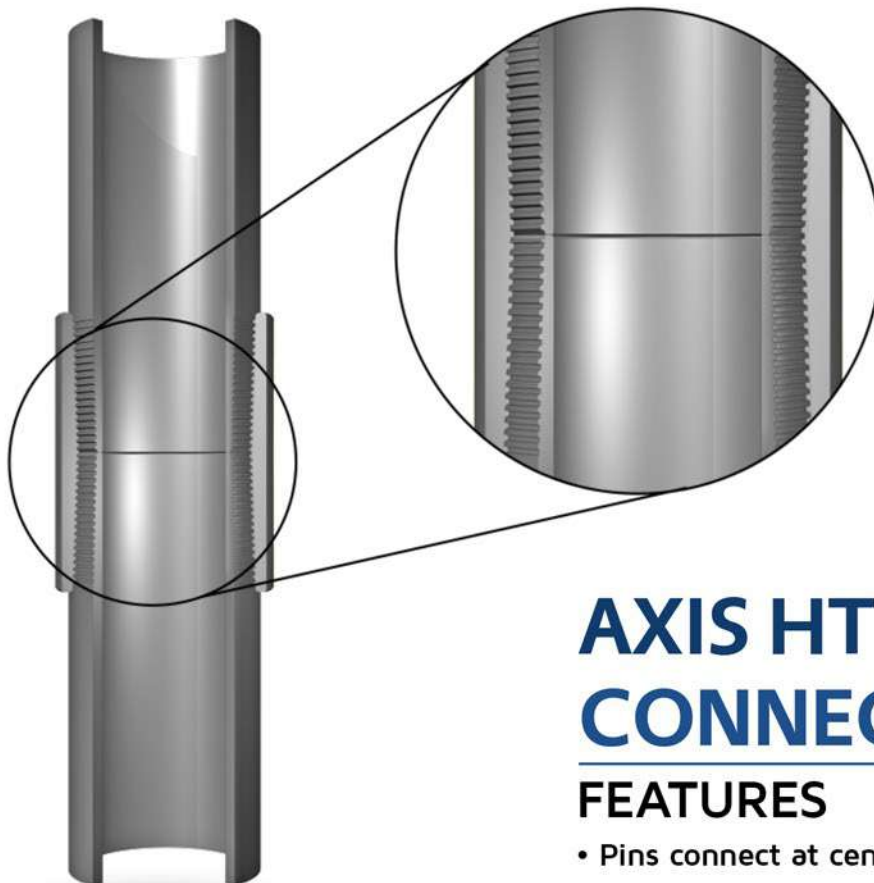
Minimum quantities may be required for production.

\*Alternate Drift.

# AXIS HT SEMI-PREMIUM

Axis Pipe and Tube's semi-premium threaded and coupled connection, provides increased torque, as well as increased torsion and compression resistance, allowing operators the ability to maneuver their casing string through the most difficult areas in the wellbore.

Axis High Torque connection is available in OD sizes from 4 ½" to 7". A 10 roll straightener provides precise ovality control resulting in a perfect end for Axis HT threading. A robotic threading inspection ensures the accuracy of each thread, and the automatic coupling bucking system guarantees the connection is properly configured and ready for use in the field.



## AXIS HT CONNECTION

### FEATURES

- Pins connect at center of coupling
- API buttress pin and coupling thread



# BENEFITS

- Easy make-up connection control
- Increased torsion and compression resistance
- High torque to yield rating
- Eliminates possible pin turning in coupling if string is rotated
- Standard down hole and BOP accessories are totally compatible with the connection
- Using API connection design provides improved economics
- Provides joint strength rating of buttress threads
- Provides a flush ID



SIZE (in)	PIPE OD (in)	NOMINAL WEIGHT (lb/ft)	YIELD TORQUE (lb/ft)	
			SMYS 80,000 PSI	SMYS 110,000 PSI
4 ½	4.5	11.60	8000	9700
		13.50	10200	12500
		15.10	10700	13000
5½	5.5	17.00	12500	16000
		20.00	18000	20800
		23.00	18600	23600
7	7.0	23.00	17000	22000
		26.00	21800	28000
		29.00	26300	33900

